



Middlesex
University
London



**YOUR
SUSTAINABLE
CAMPUS** Report 2020/2021



HIGHLIGHTS FROM THIS YEAR

- ➔ Maintained EcoCampus **Platinum/ISO 14001 certification** awarded in 2018/19, the online audit included interviews with staff and contractors
- ➔ Continued to invest in **reducing energy use**, carbon emissions are reducing per m² of space and per FTE **thanks to falling carbon factors for grid electricity**
- ➔ New purchasing agreement means that **20% of our purchased energy** will be from a **Renewable Energy Guarantee Origin**
- ➔ **Added four water refill machines** so we now have **eight machines across campus**
- ➔ Ran a **water saving campaign**, Love Every Drop, across the campus, asking staff and students to report any dripping taps or faulty toilets
- ➔ Provided **more food recycling bins** across the estate in kitchen areas to **encourage recycling**
- ➔ **Refurbished Church Farm House Pond** and investigating ways for the pond to be used as a **research resource** for our natural sciences students
- ➔ Installed **bird and bat boxes** on Hendon Grove
- ➔ **26 staff and students** completed **Carbon Literacy Training with EAUC**



As chair of the Environmental Steering Group I want to share this report, a general overview of where we are on our carbon reduction journey and how we aim to embed sustainability into our future strategy and related unit plans. We aim to sign the UN SDG Accord before the end of 2021, to acknowledge this global agenda and work to embed the goals in our curriculum, research and operations.

SEAN WELLINGTON,
Deputy Vice-Chancellor Provost



We have maintained our ISO 14001 accreditation while assisting with response to COVID 19. As well as using this opportunity to promote green travel options we have upgraded our onsite solar systems to ensure maximum self-generation. As part of our drive for transparency around our environmental impacts, we have, for the first time, published our direct carbon emissions in the Annual Financial Statement.

We have produced this Annual Environment Report with the aim to be clear about our carbon footprint and what we are doing to address it. Looking forward to the year ahead we intend to ensure sustainability is integral to the Middlesex 2030 Strategy and work on developing our Carbon Reduction Plans.

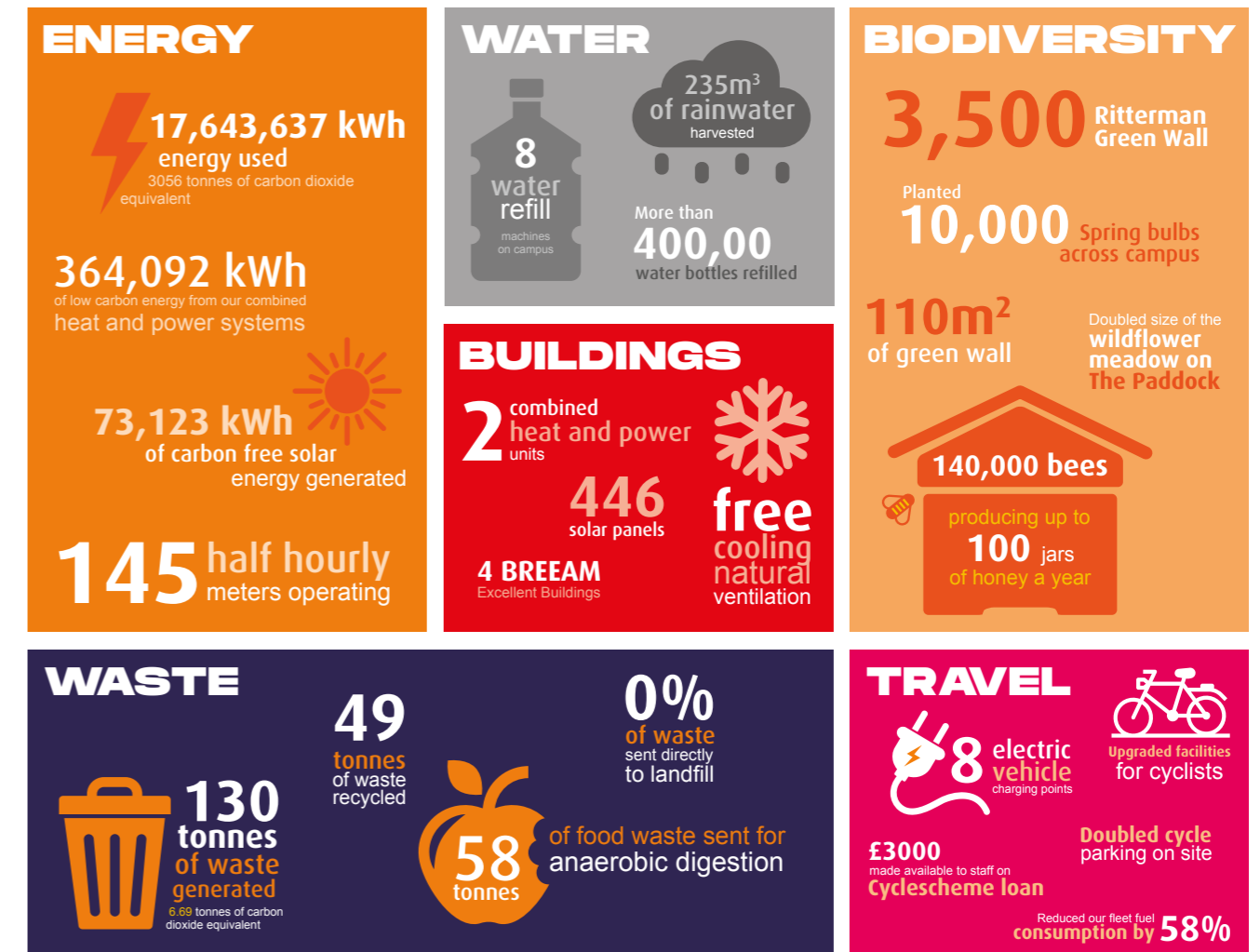
MARK WILKINSON,
Environmental Manager

TARGETS 2020/2021

Aspect Area	Objective	KPIs	Progress
Environmental Management	Implement a robust management system based on ISO 14001	Maintain <u>EcoCampus Platinum</u> /ISO 14001:2015 certification	achieved
Energy and Emissions	Achieve a 5% Energy reduction	Reduce electricity consumption on the Hendon Campus by 5% against a 2016/2017 baseline by the end of 2020/2021 Academic Year	in progress
Water	Monitor and maintain water use at current levels	Maintain water use at historical levels across the Hendon Campus	achieved
Waste	Recycle 60% of all waste	Continue to increase volume of waste recycled from all Hendon Campus buildings	in progress
Transport and Travel	Reduce carbon emissions associated with travel	Maintain the current level of Scope 3 carbon emissions associated with commuting to the Hendon Campus (using 2016 baseline)	achieved
Biodiversity	Enhance biodiversity on the estate	Maintain and implement a Biodiversity Action Plan for the Hendon Campus	achieved
Catering	Reduce carbon emissions associated with catering	Retain Fairtrade Status	achieved



2020/2021 IN NUMBERS SIGNIFICANTLY REDUCE CO₂ EMISSIONS BY 2030



This infographic illustrates a variety of achievements and is used to share information with students and staff, raising awareness and promoting our sustainable campus to the Middlesex University community #TeamMDX.



The SDG Accord

DID YOU KNOW IN 2020/2021..

Carbon Literacy Training

Reducing carbon emissions relies on everyone in our organisation being aware of the carbon impacts of their choices, and feeling motivated and supported to take action. Working in partnership with EAUC, Middlesex University trained 26 staff and students. Delegates were able to map their own carbon footprint, and gain an understanding and motivation to reduce personal and work-place emissions.

UN SDG ACCORD

We have made a commitment to sign the UN SDG Accord and reduce carbon emissions by 50% by 2030.

Water Refill Machines

Dispensing chilled, filtered, free water, the water bottle refill machines in Grove, College and MDXHouse have proved to be extremely popular, so we've added four more. You will find them in Sheppard Library, Ritterman, Hatchcroft and Williams.

Hedgehog Friendly Campus

Charlotte Barnett, veterinary nursing student made a bid for funding from our Sustainable Campus Ideas Budget and successfully installed two hedgehog houses to make ours a Hedgehog Friendly campus, working with British Hedgehog Preservation Society.

CO2 Emissions in the Financial Statement

For the first time Middlesex University reported carbon emissions in the annual, financial statement.

Your sustainable campus - the map

Check out our campus map highlighting the sustainable features on campus and if you want more details or fancy a guided tour of these features, contact sustainability@mdx.ac.uk

Mini COP Event on campus

MDX staff and students and pupils from Friern Barnet School gathered in the Quad to hear speakers and performers, and engage in debate about climate change and climate action ahead of the COP26 conference in Glasgow this year.

Variety of academic research has been reported on our web site [here](#).

REGO Purchase Agreement

Since 1 October 2021 20% of our purchased energy has been from a REGO scheme set up by our electricity supplier EDF. **REGO** means **Renewable Energy Guarantee Origin**, endorsed by Ofgem to provide transparency about the source and generation of green energy.



Recycling on campus



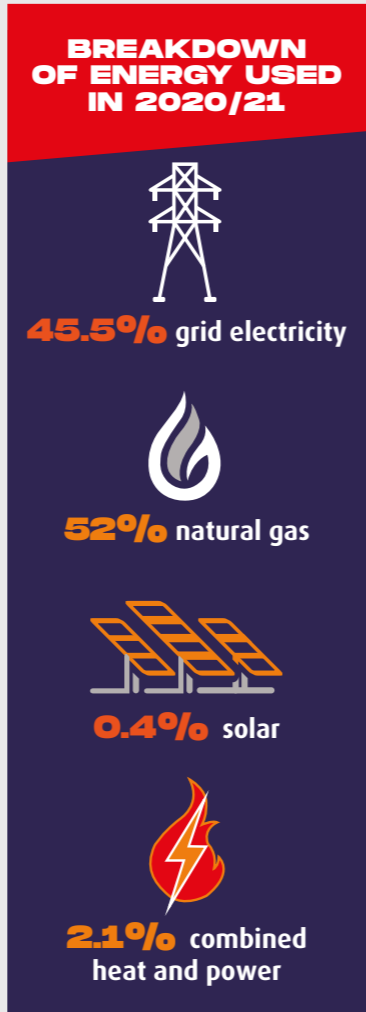
Water refill station on campus



Bees on the roof of the Grove Building

Total Energy Use (kWh)	2018/19	2019/20	2020/21
Electricity from Grid	9,516,985	8,026,574	8,027,001
Electricity from Onsite Photovoltaics	71,441	70,008	73,123
Electricity from Onsite CHP Units*	507,685	479,999	364,092
Natural Gas from Grid	7,537,749	7,189,319	9,179,421
Total Energy Use (kWh)	17,633,860	15,765,900	17,643,637

Breakdown of Total Energy Use (%)	2018/19	2019/20	2020/21
Electricity from Grid	54.0%	50.9%	45.5%
Electricity from Onsite Photovoltaics	0.4%	0.4%	0.4%
Electricity from Onsite CHP Units	2.9%	3.0%	2.1%
Natural Gas from Grid	42.7%	45.6%	52.0%



Green Wall at Ritterman Building

ENVIRONMENTAL MANAGEMENT

Our Sustainability Policy sets out the framework on how we actively manage our environmental impact through implementing the EcoCampus Environmental Management System.

In March 2020, we were awarded EcoCampus Platinum Accreditation and ISO 14001 Certification to recognise our commitment to continuously identify, evaluate and improve our environmental performance.

We are members of the Environmental Association of Universities and Colleges (EAUC), participating in the London Universities Environment Group (LUEG) and Southern University Purchasing Consortium (SUPC).

Carbon Emissions (TCO2e)	2018/19	2019/20	2020/21
Total Scope 1 and 2	3,880	3,255.26	3,385

Note: DEFRA conversion factors are used to provide carbon emissions. Carbon associated with electricity generated from onsite CHP plants is reported under natural gas conversion factors to avoid double counting emissions.

Energy Intensity Ratio	2018/19	2019/20	2020/21
kWh/m ² (Net Internal Area)	433	382	427.46
kWh/FTE (Staff and Students)	1,059.7	846.5	897.94



*Combined Heat and Power (CHP) Units



MDX.AC.UK
SUSTAINABILITY@MDX.AC.UK